



Suspect Chinese Drywall Analysis Fourier Transform Infrared Spectroscopy (Mid-Infrared)

228 Midway Lane, Suite B
Oak Ridge, TN 37830

Phone: (865) 813-1700
Fax: (865) 813-1705

www.assuredbio.com

Inspector:	Drywall Inspector	Collected:	2/3/2009
Project:	A House	Received:	2/5/2009
Job #:	321	Reported:	2/7/2009
ABID:	DI020309-1	Analyst:	Dr. E. Sobek
Sample Number:	DI020309-1-1		
Sample ID:	Sample #1		
Results:	Congruent	The FTIR spectrum of the sample is consistent with the spectral characteristics and peaks identified in contaminated Chinese drywall reference materials.	

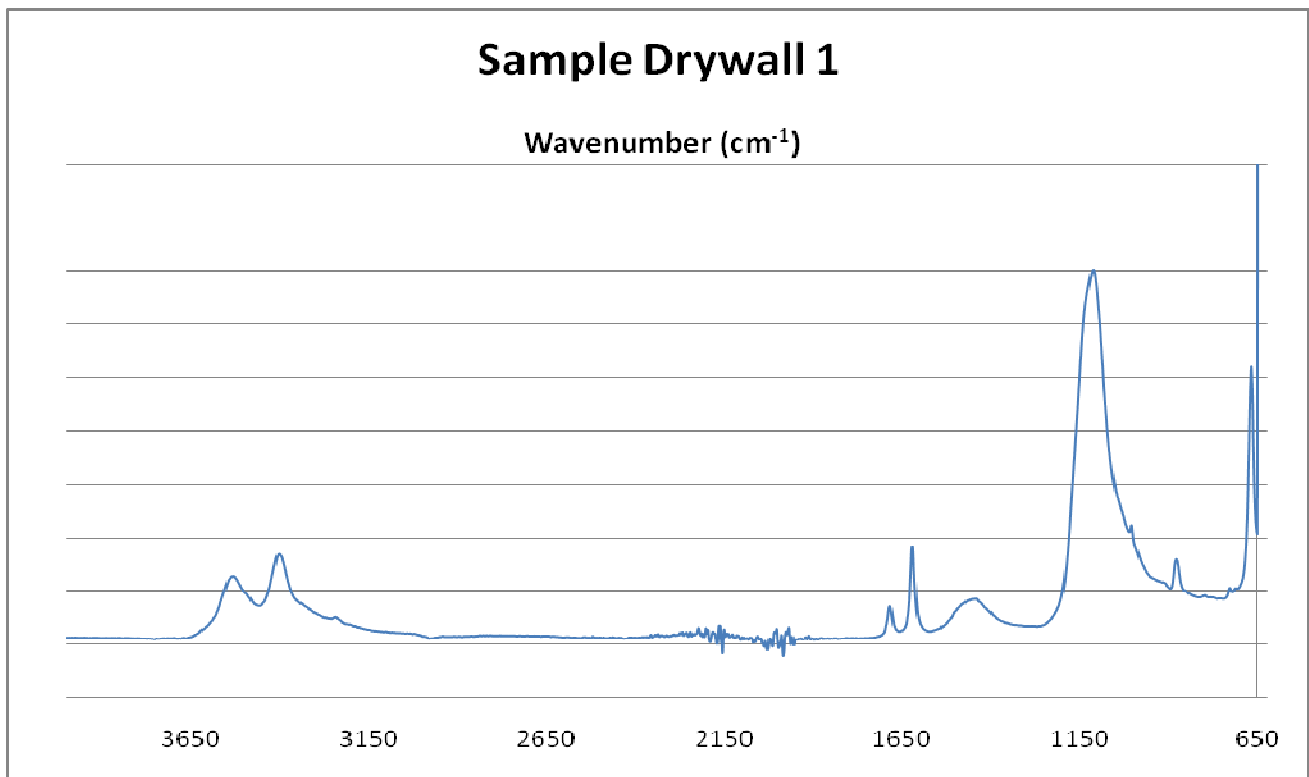


Figure. Spectral Fingerprint of sample. Each spectral fingerprint is generated from 34,010 data points. The data points are used to determine spectral congruency with known chinese drywall reference materials. Please note that the above figure is a condensed graphical representation of the averaged data scans and not intended for intersample comparisons.

Sample Number: DI020309-1-2

Sample ID: Sample #2

Results: **Incongruent** The FTIR spectrum of the sample lacks one or more spectral characteristics and/or peaks identified in contaminated Chinese drywall reference materials.

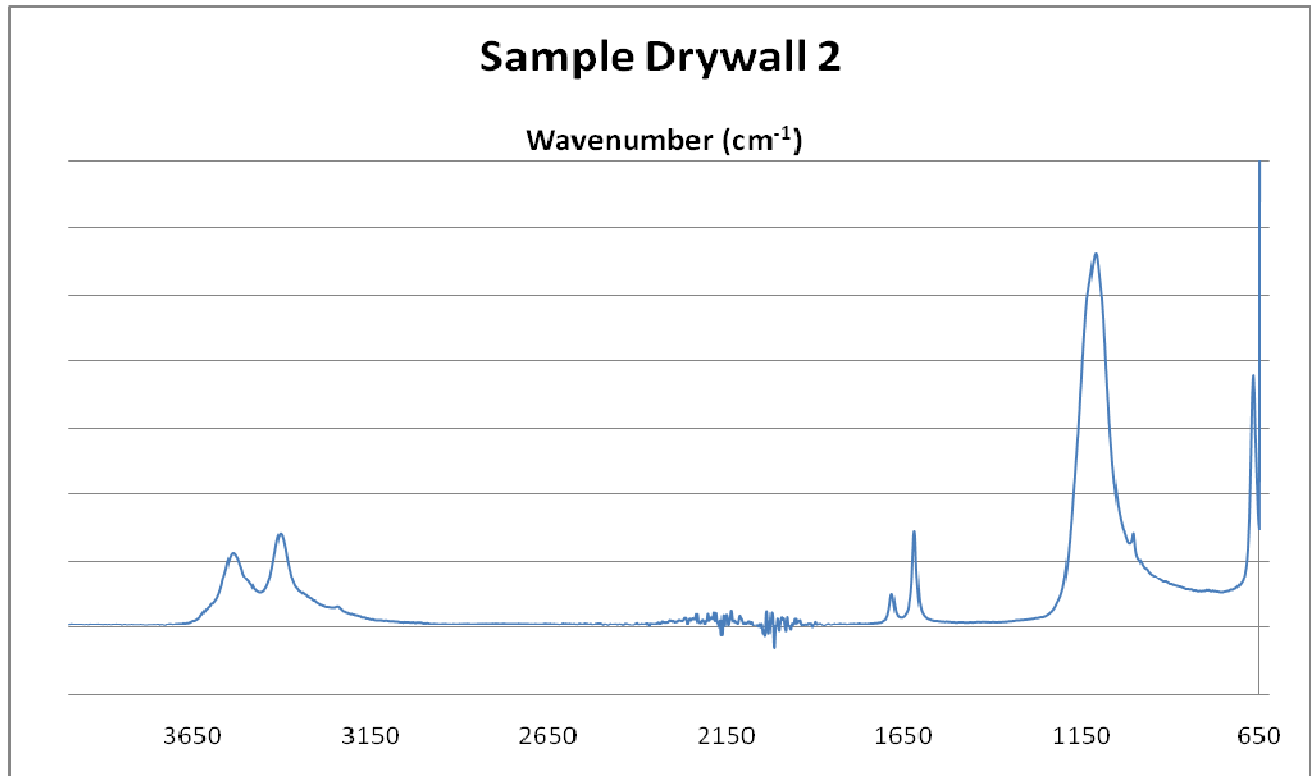
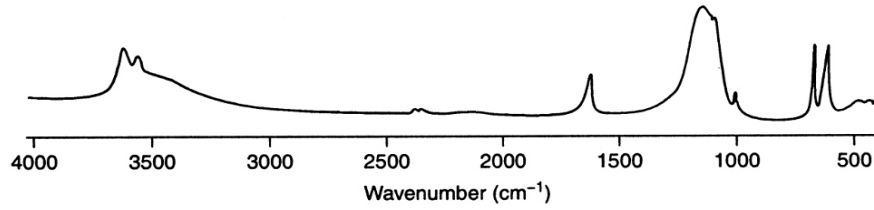


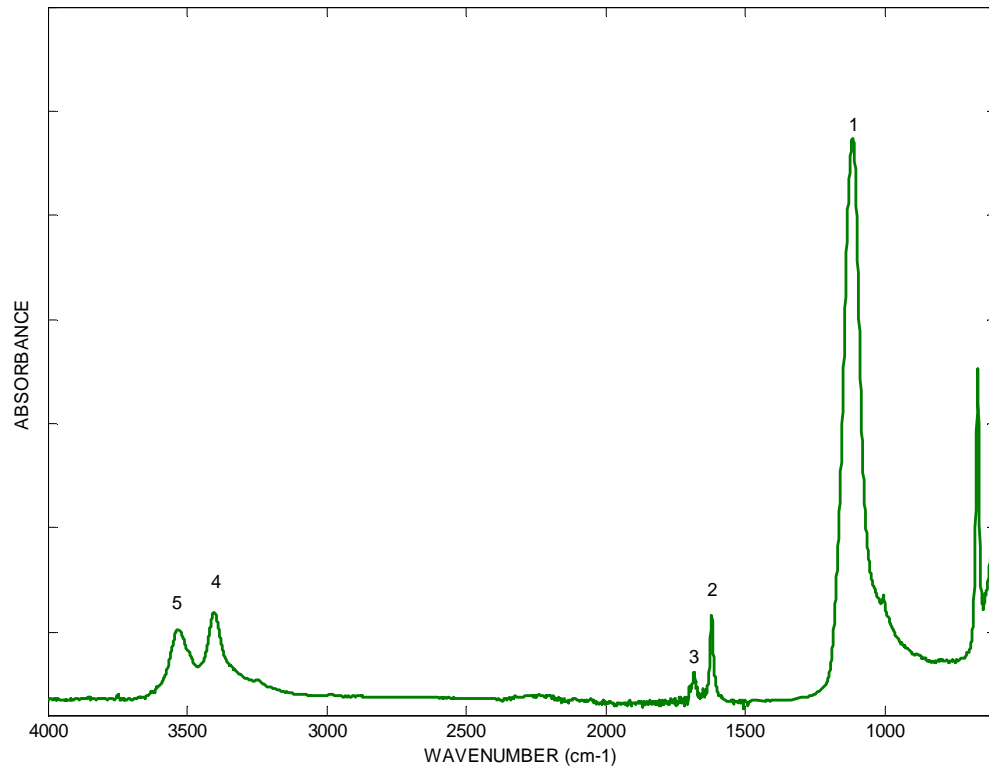
Figure. Spectral Fingerprint of sample. Each spectral fingerprint is generated from 34,010 data points. The data points are used to determine spectral congruency with known chinese drywall reference materials. Please note that the above figure is a condensed graphical representation of the averaged data scans and not intended for intersample comparisons.

Reference Spectra

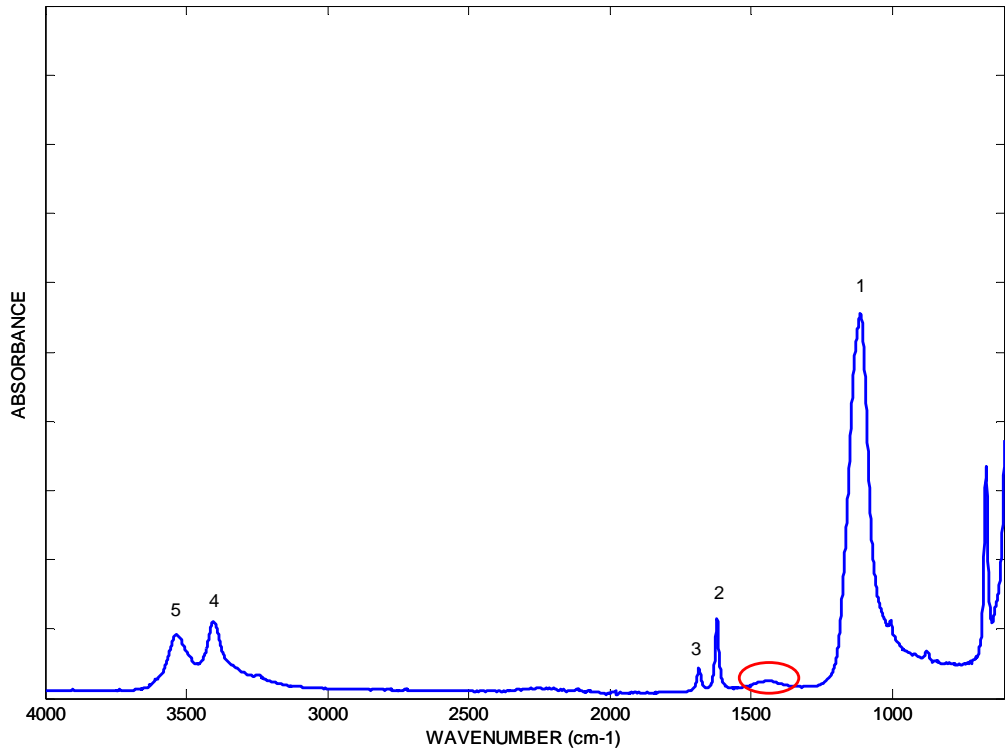
Gypsum (Calcium Sulfate)



American Drywall Reference Material



Type I Chinese Drywall Reference Material



Type II Chinese Drywall Reference Material

